



The  
Mount School  
York



# SCHOLARSHIP AWARDS & BURSARIES 2024

THE MOUNT SCHOOL YORK

---

[mountschoolyork.co.uk](https://mountschoolyork.co.uk)

---



# SCHOLARSHIP AWARDS 2024

We are delighted to offer a number of Scholarship Awards to pupils who show excellence and potential in a range of disciplines. These currently include: Academic, Art, Music, Performing Arts and Sport. All our Scholars are excellent role models inside and outside the classroom. They participate fully in School life and the wider extra-curricular activities programme. They are expected to attend all major school events and to act as ambassadors for the School.

- Scholarships are available for entry into Year 7, Year 9 and Year 12.
- **Apart from Music Scholarships, all scholarships are honorary, and offer no financial discounts.**
- All Scholarships including Music can be applied for alongside a means-tested bursary, which will provide a fee discount.
- Mount Scholars benefit from encouragement and challenge in a variety of different ways in their scholarship discipline.
- Scholarships may be applied for by day pupils, boarders and international students. A pupil may only hold one scholarship at any time.
- In making such awards, the School will always take into consideration each pupil's potential for contributing to the ethos and life of the School community.
- Providing they continue to meet the appropriate criteria, a scholarship is awarded for the duration of a girl's School career at The Mount.
- The Principal reserves the right to withdraw a scholarship at any time should the criteria not continue be met.

## SCHOLARSHIP AWARDS

Scholarships are awarded for excellence in a range of different disciplines including:

- **ACADEMIC**
- **ART**
- **MUSIC**
- **PERFORMING ARTS**
- **SPORT**

### MUSIC SCHOLARSHIPS

Music Scholarships, with up to 50% fee remission on day fees, are available on entry to the Senior School and will be awarded to students of outstanding musical ability or potential, who are academically able. They are awarded based on performance in a live audition and tests, and a good performance in the general School entrance assessments.

Candidates will be expected to have reached, at least, Grade 4 standard (11+) or Grade 6 standard (13+) or Grade 7 standard (16+) in at least one instrument. Music Scholarships are reviewed annually and may be withdrawn at the School's discretion.

### SCHOLARSHIPS FOR SIXTH FORM COLLEGE ENTRY

(External Applicants)

We offer a means-tested General Academic Scholarship/bursary for external applicants who achieve 7+ Grade 7/8/9 or A/A\* equivalent at GCSE. Scholarships are offered on predicted GCSE grades and secured after the publication of examination results in August.



# APPLICATION & ASSESSMENT

- All Scholarship and Bursary applications are completed during the Autumn Term. Scholarship information and application packs will be sent out to all registered applicants who have expressed an interest in the Scholarship Awards.
- Scholarship applications are required to be completed and returned to the Admissions Manager by the dates listed below.
- Scholarship assessments take place in December and January (dates below).
- All applicants wishing to be considered for a scholarship will be invited to take part in our Scholarship Assessments. Assessments will take place in a variety of ways depending on the scholarship a pupil is applying for.
- Decisions on scholarships and bursaries are made following the assessments and will be disclosed to families via a formal letter.

SENIOR SCHOOL	
AUTUMN TERM 2023	SCHOLARSHIP & BURSARY APPLICATION PACKS DISTRIBUTED
1 DECEMBER 2023	SCHOLARSHIP & BURSARY APPLICATION DEADLINE
w/c 15 JANUARY 2024	YEAR 7 & YEAR 9 SCHOLARSHIP ASSESSMENT WEEK
20 JANUARY 2024	YEAR 7 & YEAR 9 ENTRANCE EXAM DAY
FEBRUARY 2024	SCHOLARSHIPS AWARDED

SIXTH FORM COLLEGE	
AUTUMN TERM 2023	SCHOLARSHIP & BURSARY APPLICATION PACKS DISTRIBUTED
20 NOVEMBER 2022	SCHOLARSHIP & BURSARY APPLICATION DEADLINE
30 NOV & 1 DEC 2023	SIXTH FORM COLLEGE SCHOLARSHIP ASSESSMENTS
DECEMBER 2023	SCHOLARSHIPS AWARDED

If you have any questions regarding Scholarship applications at The Mount School York, please contact our Admissions Team.

01904 232323 | [admissions@mountschoolyork.co.uk](mailto:admissions@mountschoolyork.co.uk)





## Year 7 & Year 9 Scholarship Awards

### GENERAL ACADEMIC SCHOLARSHIP

Honorary Academic Scholarships are awarded to candidates who demonstrate outstanding potential in their academic studies and who display a very strong performance across all entrance tests.

**ASSESSMENT:** Candidates will take part in entrance assessments which include Maths, English, Verbal Reasoning and Non-Verbal Reasoning.

### MUSIC SCHOLARSHIP

In our Music Scholarship programme we are looking for musical excellence and potential. Candidates will need to have a good ability to sight read, good aural skills and an ability to sing. Year 7 pupils will be expected to have reached a standard of Grade 4 on their first instrument and Year 9 pupils Grade 6. They will also need to have some keyboard ability. Music Scholars should be prepared to lead or direct a vocal or instrumental ensemble, perform solos and represent the School in Music. Music Scholars will also be expected to participate fully in the School's orchestras, choirs and chamber ensembles.

**ASSESSMENT:** Pupils applying for a Music Scholarship will have to audition, preparing two contrasting pieces of music. They will also have to demonstrate ability to sight-read. Pupils have to complete an aural test and an interview with the Director of Music.

### PERFORMING ARTS SCHOLARSHIP

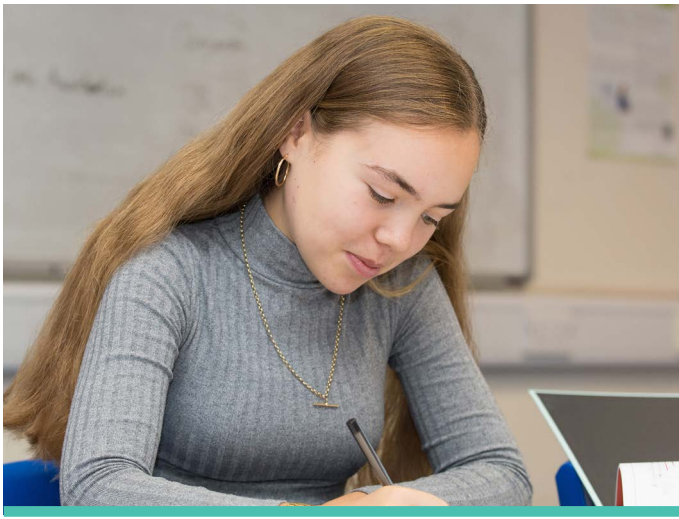
Honorary Performing Arts Scholarships are awarded to pupils who demonstrate a talent in and show a dedication and passion for the Performing Arts. Skills may lie in dance, drama or musical theatre. They must be willing to make a positive contribution to the Performing Arts programme and participate in all School productions.

**ASSESSMENT:** Prospective scholarship candidates will be assessed in a formal audition. Candidates will have to perform a short audition piece of their choice demonstrating their chosen talents. Candidates will also have to answer questions about their chosen discipline.

### SPORT SCHOLARSHIP

Honorary Sport Scholarships are awarded to pupils proficient at school level in a minimum of two different sporting activities and at club level in at least one of these. These sporting activities should be part of The Mount School Curriculum and Extra-Curricular Programme. Sports Scholars must represent the School in competitive matches in a variety of Sports (including Saturday morning fixtures). They will also be expected to take on sport leadership roles such as coaching, umpiring and captaincies.

**ASSESSMENT:** To assess potential Sports Scholars for proficiency, evidence will have to be provided of their sports club affiliation(s) and performances from the most recent season. During the Scholarship Assessment applicants will be required to take a skills test, which will involve general motor skills, skills tests relating to their discipline and skills tests in additional Mount School Sport curriculum activities. The applicant will also be interviewed by the Director of Sport.



## Sixth Form College Scholarship Awards

### ART SCHOLARSHIP

Honorary Art Scholarships are awarded to pupils who demonstrate outstanding artistic skill, enthusiasm for the subject and future potential. As part of the scholarship award, pupils will be expected to represent the Art Department and in doing so they will be required to produce artwork for school pamphlets and poster designs. They will also be expected to study Art at A Level.

**ASSESSMENT:** Candidates' level of artistic skill, enthusiasm and future potential will be assessed during an interview to which candidates should bring a portfolio of recent work, including a sketchbook. This could include samples of GCSE Art work as well as other design-based projects. Candidates should show an ability to work in a range of media; this could include fine art painting and drawing as well as sculpture, printmaking, textiles, photography and mixed media work. Candidates should include examples of work that have been depicted from life as well as more imaginative, personal pieces. Candidates will be expected to talk about their work and ideas during an interview with the Head of Art as well as produce a still life drawing as part of the assessment.

### PERFORMING ARTS SCHOLARSHIP

Applications for an honorary Performing Arts Scholarship are welcomed from candidates who can demonstrate talent in this area and show a commitment to the subject both in and out of school. A Performing Arts Scholarship will be awarded to a student who impresses in either dance, drama or musical theatre. They must be willing to make a positive contribution to the Performing Arts programme and participate in all School productions.

**ASSESSMENT:** Prospective scholarship candidates will be assessed in a formal audition. Candidates will have to perform a short audition piece of their choice demonstrating their chosen talents. Candidates will also have to answer questions about their chosen discipline.

### MUSIC SCHOLARSHIP

Music Scholarships are awarded to experienced and confident musicians who have progressed rapidly in whatever musical disciplines they have chosen and who will take important roles in a wide variety of School musical ensembles. Candidates should be at least Associated Board Grade 7 standard, although musicality is more important than paper qualifications. Music Scholars will also be expected to participate fully in the School's orchestras, choirs and chamber ensembles.

**ASSESSMENT:** Candidates will be expected to play two contrasting pieces, or, if offering more than one instrument/voice, one piece of each. In addition, candidates will sight read, sight sing and talk about their musical experience and aspirations. Technical ability, such as intonation, tone, style and communication will be judged, but at this stage we are expecting some polish and above all, mature musicality in performance.

### SPORT SCHOLARSHIP

Honorary Sport Scholarships are awarded to pupils proficient at school level in a minimum of two different Sporting activities and at club level in at least one of these. These sporting activities should be part of The Mount School Curriculum and Extra-Curricular Programme. Sports Scholars must represent the School in competitive matches in a variety of sports (including Saturday morning fixtures). They will also be expected to take on sport leadership roles such as coaching, umpiring and captaincies.

To assess potential Sports Scholars for proficiency, evidence will have to be provided of their sports club affiliation(s) and performances from the most recent season. During the Scholarship Assessment applicants will be required to take a skills test, which will involve general motor skills, skills tests relating to their discipline and skills tests in additional Mount School Sport curriculum activities. The applicant will also be interviewed by the Director of Sport.

# MEANS TESTED BURSARIES

**The Mount School has a long history of providing financial assistance to pupils and their families through bursaries. The awarding of bursaries is embedded in The Mount School's culture and is something in which we passionately believe. It is our aim to reach out to those children whose families cannot meet the cost of fees unaided and offer them the opportunity to receive a Mount School education in the Senior School years.**

## WHAT IS A BURSARY?

Bursaries are available for entry to The Mount Senior School or Sixth Form College. Bursaries are intended to provide financial support for lower-income families so that their daughters may benefit from a Mount School education. A bursary is means-tested, so the value of the bursary is relative to the financial resources of the pupil's family. A bursary is expressed as a percentage of the standard day fee and will reduce the termly bills proportionately.

Most funding for bursary support comes from the School's regular income ie the fees paid by other parents, so the total amount is limited each year.

The School does not publish any details about bursaries awarded or which pupils have received financial support. All information is treated in strictest confidence and we expect families and pupils to respect this confidence as well.

## WHO IS ELIGIBLE FOR A BURSARY?

Families must be able to demonstrate that they are already doing all they can to maximise their income and reduce their expenditure, so that the financial support from the School is in addition to their own efforts. Our means-testing will take into account factors such as the value of the family home and cars, earned income from employment or self-employment (by both parents except in particular circumstances), essential expenditure (eg mortgage) and living costs.

You may be eligible for a bursary if you can answer YES to all of these questions:

- Are you a UK national or an asylum seeker who has been granted the right of permanent residence in the UK?
- Are you applying for entry into Year 7, Year 9 or Year 12?
- Are you doing all you can to maximise income (eg both parents in full-time employment or able to explain why that is not possible)?

- Are your net assets valued at no more than the local average, typically £300,000?
- Is your family's gross income no more than the local average, typically £60,000 a year?

Please note that we will expect everyone with parental responsibility to complete a financial statement.

## HOW DOES THE SCHEME WORK?

Bursaries are available for entry to The Mount Senior School or Sixth Form College.

The Mount School's bursary scheme is designed to be flexible and includes offers to parents from Year 7 upwards during the admissions process. It is not the usual practice to offer bursaries for entry into the Junior School but consideration may be given to parents of pupils who wish to join Year 6 with the intention of moving through into The Mount Senior School.

The bursary resources available to The Mount School are allocated in the Spring Term of the entry year. The fair allocation of the School's resources depends on transparency and ensuring that the families applying for bursaries are informed as a place is offered or before the acceptance date is reached.

Bursaries are usually awarded up to a maximum of 50% of day school fees although higher awards may be made in exceptional circumstances. A very limited number of larger bursaries (up to 100%) may also be available for entry into College 1 (Year 12) for high-achieving GCSE students who attain seven or more Grades 7/8/9 at any maintained secondary school.

All bursary requests will be considered together. Those which meet the financial criteria will be assessed objectively and then considered alongside other requests, taking into account factors such as (in no particular order) academic ability as demonstrated in the entrance exam, scholarship offers, Quaker affiliation, family circumstances, specific social need.



# SENIOR SCHOOL & SIXTH FORM COLLEGE ENTRY

Competition for bursaries is always strong and financial support may only be given to those with a strong case for support. Simply meeting the financial criteria is not sufficient.

## HOW DO PARENTS APPLY?

Enquiries should be made during the Autumn Term, with a view to pupils taking part in the relevant entrance procedure prior to the date of entry. Enquiries about bursaries and application form requests should be directed to Heather Berry, Finance Manager, at [hberry@mountschoolyork.co.uk](mailto:hberry@mountschoolyork.co.uk)

If you think you may be eligible and would like to apply for a means-tested bursary, please follow the steps below. **For September 2024 entry you will need to register your child for a place in the School, no later than 20 November 2023 for Year 12 or by 1 December 2023 for Senior School.**

**STEP ONE:** Register your child for a place in the School no later than **20 November 2023** for Year 12 entry or **1 December 2023** for Senior School entry.

**STEP TWO:** Request financial support on your Registration Form.

**STEP THREE:** Complete a confidential financial statement supplied by the School and return it, along with supporting evidence by **Wednesday 22 November 2023 for Year 12 entry** or **by Friday 5 January 2024 for Senior School entry.**

**STEP FOUR:** A home visit may be made by a representative of the School as part of the verification process.

## OTHER SOURCES OF FUNDING

Bursaries are also available through a number of Trusts, details of which can be provided by the Finance Team.

## SIBLING DISCOUNTS

- Siblings of a current pupil will receive a 5% discount, for as long as the older sibling remains in the School.

## PAYMENT OF FEES IN ADVANCE

The Mount School offers a Fees in Advance Scheme which provides parents with a financial benefit by paying a lump sum in advance. Savings against full fees are calculated using an assumed rate of return on the lump sum which is then accrued in the fund. (The risk of not achieving the rate is borne by the School). The savings offered under the scheme are often considered more attractive by parents than other investments where the interest is a taxable benefit.

- If you would like further information about our Payment of Fees in Advance Scheme or a quotation, please contact Heather Berry, Finance Manager.

For more information or questions about Bursary applications at The Mount School York,  
please contact the Finance Department  
**01904 667500 | [finance@mountschoolyork.co.uk](mailto:finance@mountschoolyork.co.uk)**



*Fidelis in Parvo*  
Faithfulness in small things

[ADMISSIONS@MOUNTSCHOOLYORK.CO.UK](mailto:ADMISSIONS@MOUNTSCHOOLYORK.CO.UK)

[WWW.MOUNTSCHOOLYORK.CO.UK](http://WWW.MOUNTSCHOOLYORK.CO.UK)

THE MOUNT SCHOOL YORK, DALTON TERRACE, YORK, YO24 4DD

A QUAKER FOUNDATION